



Mahavir Metals (India)

An ISO 9001:2015 Certified Company



Flanges



Fittings



Fasteners



Compression
Tube Fittings



25 YEARS OF EXPERIENCE

IN THIS INDUSTRY

Engaged as the leading wholesale dealers and producers of Stainless Steel Products, Mahavir metals India, is a partnership-based company. We are delighted to introduce Mahavir metals India as one of Stainless Steel & Metal Products' leading stockist, importer, manufacturer in India. We are a big importer of steel products from Stainless Steel Tubing, Stainless Steel Table, Stainless Steel Flange and more. Established in the year 1948, We at Mahavir metals, aim to give our consumers reliable and high-caliber goods which are on an equal footing with their preferences and needs



ISO Certified



Superior Quality



Customer Focused
Approach



24/7 Customer
Support



Buttweld Fittings

Stainless Steel

Size	: 1/2"NB to 36"NB ANSI B16.9 MSS-SP43
Schedule	: 10S/40S/80S/160S/XXS
Specification	: ASTM A403
Grade	: 304, 304L, 304H, 316, 316L, 316Ti, 316H, 316LN, 309S, 309H, 310S, 310H, 317,317L, 317H,321,321H, 347, 347H, 904L, 254SMO

Carbon Steel

Specification	: ASTM A234 Gr.WPB, WPC, A420 Gr.WPL3, WPL6, WPL9
Fittings	: Seamless 1SNB To 600NB Split / Welded 100NB To 1200NB
Schedule	: Sch. 5 to Sch. XXS

Alloy Steel

Specification	: ASTM A234 Gr.WPI, WPS, WP9, WPII , WP12, WP22, WP91, P92
Fittings	: Seamless 1SNB To 600NB Split / Welded 100NB To 1200NB
Schedule	: Sch. 5 to Sch. XXS

Duplex Steel

Specification	: ASTM A815
Grade	: UNS S31803, UNS S32205 (2205), UNS S32750 (2507), UNS S32760 (Zeron 100)
Lein	: ASTM A 815, 790 – UNS 532304 (2304)

Nickel Alloy

Nickel	
Grade	: UNS N02200, UNS N02201
Inconel	
Grade	: UNS N06600, UNS N06625, UNS N08800, UNS N08810, UNS N08811, UNS N08825
Monel	
Grade	: Grade UNS N04400 , UNS N05500
Hastelloy	
Grade	: UNS N10276, UNS N06022 , UNS N10665
Alloy 20	
Grade	: UNS N08020
Cupro Nickel	
Grade	: ASTM B466 C70600 (90:10), ASTM B466 C71500 (70:30)
Titanium	
Specification	: ASTM B363
Grade	: Gr.1 R 56250 (CP4), Gr.2 R 50400 (CP3), Gr.3 50550 (CP2), Gr.4 50700 (CPI), Gr.7 52400, Gr.11 R 52250

Test Certificate

Manufacturer Test Certification (En 3.1 & 3.2, IBR Test Certificate)

Specializing in

Hi-Nickel & Stainless Steel Series

Inconel, Incoloy, Monel, Hastelloy, Duplex, are Registered Trade Marks of their Respective Owners.



Flanges

Size

1/2" NB TO 72" NB

Class

150#, 300#, 600#, 900#, 1500# & 2500#.

Standard

ANSI Flanges : 150#, 300#, 600#, 900#, 1500# & 2500#.
AWWA : Class 2B, 2D, 4E, SE, 6E
DIN : PN6,PN10,PN16,PN25,PN40
JIS : SK, IOK
BS : Table D, E, F.

Duplex & Super Duplex

UNS S31803, UNS S32750, UNS S32760.

Hastelloy Alloy

ASTM B564 Hastelloy B2, C276, C2.

Incoloy Alloys

ASTM B564 Alloy 20, Alloy A286
Alloy 800H/800HT, Alloy 825.

Inconel Alloys

ASTM B564 Alloy 600, Alloy 601, Alloy 625,
Alloy 718, Alloy 725.

Monel Alloys

ASTM B564 Monel 400, Monel K500.

Stainless Steel

ASTM A182, F304,304L,304H,316,
316L,317,317L,321,310,347,904L.

Carbon Steel

ASTM A105,A694 F42,A350 LF2.

Alloy Steel

ASTM A182 F1,F5,F9,F11,F22,F91

Test Certificate

Manufacturer Test Certification (En 3.1 & 3.2, IBR Test Certificate)

TYPES

- PLATE BLANK FLANGE
- WELDNECK FLANGE
- LONG WELD NECK FLANGE
- SCREWED FLANGE
- BLIND FLANGE
- THREADED FLANGE
- LAP JOINT FLANGE
- ORIFICE FLANGE
- SLIPON
- SOCKET WELD FLANGE
- RTJ FLANGE
- SPECTACLE
- LARGE RINGS
- DECK FLANGES
- REDUCING FLANGES



Mahavir Metals (India)



Forged Fittings

Stainless Steel

Size : 1/2"N8 to 4"N8 (Socket Weld & Threaded)
Class : 3000#, 6000#, 9000#, in ANSI 8 16.11
Specification : ASTM A182, A240
Grade : 304, 304L, 304H, 316, 316L, 316Ti, 316H, 316LN, 309S, 309H, 310S, 310H, 317, 317L, 317H, 321, 321H, 347, 347H, 904L, 254SMO

Carbon Steel

ASTM A105, A350 LF2, LF3, LF6

Alloy Steel

ASTM A182 F1, F5, F9, F11, F12, F22, F91

Duplex Steel

Specification : ASTM A182
Grade : F51, F53, F55, F60

Titanium

Specification : ASTM 8381
Grade : Gr.1 R 56250(CP4), Gr.2 R 50400 (CP3), Gr.3 50550 (CP2), Gr.4 50700 (CPI), Gr.7 52400, Gr.IR 52250
Specification : ASTM 8381
Grade : Gr. 5 R 56400 (6Al-4V), Gr.23 R 56401 (6Al-4V-ELI), Gr. 12 R 53400

Nickel Alloy

Nickel
Grade : UNS N02200, UNS N02201
Inconel
Grade : N06600, UNS N06625, UNS N08800, UNS N08810, UNS N08811, UNS N08825
Monel
Grade : UNS N04400, UNS N05000
Hastelloy
Grade : UNS N10276, UNS N06022, UNS N10665
Alloy 20
Grade : UNS N08020
Copper-Nickel
Grade : UNS C70600 (90:10), UNS C71500 (70:30)

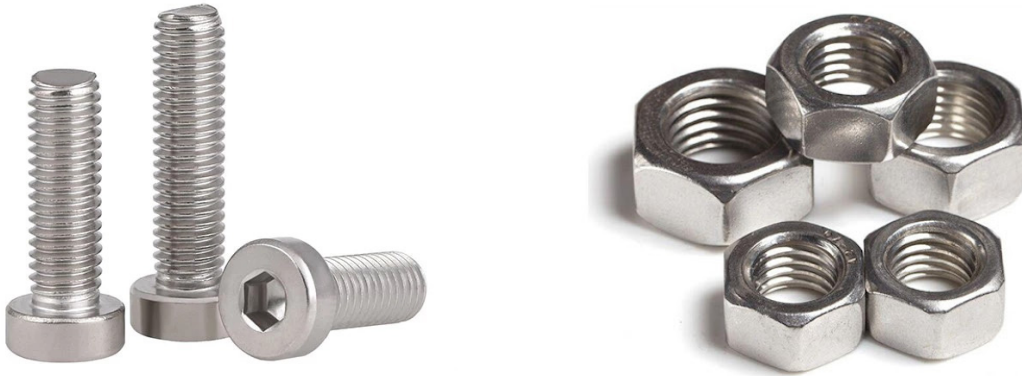
Test Certificate

Manufacturer Test Certification (En 3.1 & 3.2, IBR Test Certificate)

Specializing in

Hi-Nickel & Stainless Steel Series

Inconel, Incoloy, Monel, Hastelloy, Duplex, are Registered Trade Marks of their Respective Owners.



Fasteners

Stainless Steel

Grade : 304, 304L, 304H, 316, 316L, 316Ti, 316H, 316LN, 309S, 309H, 310S, 310H, 317, 317L, 317H, 321, 321H, 347, 347H, 904L, SMO 254, 253MA

Alloy Steel

ASTM A193 Gr.B7, A193 Gr. B16, A194 Gr.2H, A194 Gr.7

Duplex Steel

Grade : UNS S31803, UNS S32205 (2205), UNS S32750 (2507), UNS S32760 (Zeran 100)

Titanium

Specification : ASTM B381
Grade : Gr.1R 56250 (CP4), Gr.2 R 50400 (CP3), Gr.3 50550 (CP2), Gr.4 50700 (CP1), Gr.7 52400 Gr.11R52250

Specification : ASTM B381
Grade : Gr.5 R 56400 (6Al-4V), Gr.23 R 56401 (6AL-4V-ELI), Gr.12 R 53400

Nickel Alloy

Nickel
Grade : UNS N02200, UNS N02201

Inconel
Grade : UNS N06600, UNS N06625, UNS N08800, UNS N08810, UNS N08811, UNS N08825

Monel
Grade : UNS N04400, UNS N05500

Hastelloy
Grade : UNS N10276, UNS N06022, UNS N10665

Alloy 20
Grade : UNS N08020

Copper-Nickel
Grade : UNS C70600 (90:10), UNS C71500 (70:30)

Test Certificate

· EN 10204 3.1/3.2
· IBR



Pipe & Tubes

Stainless Steel

Material Standard of SS Pipe : MILS, JIS G3459, JIS G3463, DIN 17456, ASTM A778, ASTM A213, UNS, ANSI, S31803, ASTM A269, DIN 17457, GB13296, DIN 17459, S31500, A312, S32750, ASTM A789, ASME, BS3605, 00Cr19Ni10, ASTM, 08X18H10T, EN10216, AMS, GOST9941

Material : 309.317, 316Ti, 304L, 316, 347, 321H, 347H,

Types : Hot Rolled & Cold rolled

Sizes : wall thickness
1 MM To 150 Mm
Outer Diameter
6 MM To 2500 MM

Carbon Steel

ASTM A106 GR. A , B & C API 5L, GR. A / B. X92, X52, X60 ASTM A 53 GR. A/B ASTM A-179 /192 . DIN 17175/2391. ASTM A210 BS 3059 / GR. 1 OR GR 2

Alloy Steel

20 SCH20, SCH30, SCH40, STD, SCH80, XS, SCH60, SCH80, SCH120, SCH140, SCH160, XXS

Duplex Steel

Specifications : ASTM A790 / ASME SA790, ASTM A789 / ASME SA A789

Dimensions : ASTM, ASME and API.

Schedule : SCH 5, SCH10, SCH 40, SCH 80, SCH 80S, SCH 160, SCH XXS, SCH XS

Nickel Alloy

Nickel Standard : ASTM, ASME, JIS, AISI, AMS, EN, SAE, DIN, NF, TOCT, DS, DTD, GB

Inconel Standard : ASME SB-167 ASME SB-829 ASME SB-775 ASME SB-725, UNS N06600 / Werkstoff Nr. 2.4816

Monel Standard : ASTM, ASME, API, GB, AISI, DIN, EN, SUS, UNS

Alloy 20 Standard : ASTM, ASME and API

Copper-Nickel Standard : ASTM, ASME and API

Titanium Standard : ASTM, ASME and API

Test Certificate

Manufacturer Test Certification (En 3.1 & 3.2, IBR Test Certificate)



Mahavir Metals (India)



Round Bars

Stainless Steel

Size	: 5mm to 500mm dia
Class	: 500mm to 6000mm long and in cut to size
Specification	: ASTM A276, A479, A582
Grade	: 304, 304L, 304H, 316, 316L, 316Ti, 316H, 316LN, 309S, 309H, 310S, 310H, 317, 317L, 317H, 321, 321H, 347, 347H, 904 405, 409, 410, 416, 420, 430 431, 446, 440C, 422, 254 SMO, 253MA

Carbon Steel

ASTM A105, A350 LF2, LF3, LF6

Alloy Steel

ASTM A182 F1, F5, F9, F11, F12, F22, F91

AISI 4130, 4140, 4145, 4340, 8620, 8630

Duplex Steel

Specification	: ASTM A276, A479
Grade	: UNS S31803, UNS S32205 (2205), UNS S32750 (2507), UNS S32760 (Zeron 100)

Titanium

Specification	: ASTM B348
Grade	: Gr.1 R 56250 (CP4), Gr.2 R 50400 (CP3), Gr.3 50550 (CP2), Gr.4 50700 (CPI), Gr.7 52400

Specification	: ASTM B348
Grade	: Gr.5 R 56400 (6Al-4V), Gr.23 R 56401 (6AL-4V-ELI), Gr.12 R 53400

Nickel Alloy

Nickel	
Grade	: UNS N02200, UNS N02201
Inconel	
Grade	: N06600, UNS N06625, UNS N08800, UNS N08810, UNS N08811, UNS N08825
Monel	
Grade	: UNS N04400, UNS N05500
Hastelloy	
Grade	: UNS N10276, UNS N06022, UNS N10665
Alloy 20	
Grade	: UNS N08020
Copper-Nickel	
Grade	: UNS C70600 (90:10), UNS C71500 (70:30)

Test Certificate

Manufacturer Test Certification (En 3.1 & 3.2, IBR Test Certificate)



Mahavir Metals (India)



Sheets, Plates & Coils

Stainless Steel

Range : 0.5mm to 200 mm thick in 1000 mm To 3000 mm
Specification : ASTMA240
Grade : 3304, 304L, 304H, 316, 316L, 316Ti, 316H, 316LN, 309S, 309H, 310S, 310H, 317, 317L, 317H, 321, 321H, 347, 347H, 904L, 405, 409, 409M, 410, 420, 430, 431, 446, 441, 444, SMO 254, 253MA

Carbon Steel

ASTM A36, A285 Gr.C, A516 Gr.70, IS 2062 Gr. A/B

Alloy Steel

ASTM A387 Gr.11, Gr.12, Gr.22, Gr.91

(CL. 1/2) 16Mo3, 15Mo3

Wear Resistant Plates

Hardox 400, Hardox 500, Abrex 400, Abrex 500, Sumihard 400, Sumihard 500

Duplex Steel

Specification : ASTM A240
Grade : UNS 531803, 532205 (2205)

Nickel Alloy

Nickel
Grade : UNS N02200, UNS N02201

Inconel
Grade : UNS N06600, UNS N06625, UNS N08800, UNS N08810, UNS N08811, UNS N08825

Monel
Grade : UNS N04400, UNS N05500

Hastelloy
Grade : UNS N10276, UNS N06022, UNS N10665

Alloy 20
Grade : UNS N08020

Copper-Nickel
Grade : UNS C70600 (90:10), UNS C71500 (70:30)

Titanium

Specification : ASTM B265
Grade : Gr.1 R 56250 (CP4), Gr.2 R 50400 (CP3), Gr.3 50550 (CP2), Gr.4 50700 (CPI), Gr.7 52400

Specification : ASTM B265
Grade : Gr.5 R 56400 (6Al-4V), Gr.23 R 56401 (6Al-4V-ELI), Gr.12 R 53400

Test Certificate

· EN 10204 3.1/3.2
· NACE M R0175
· IBR



Mahavir Metals (India)



Surgical Pipes & Tubes

Stainless Steel

- Size** : 4 MM OD To 50 MM OD Thk: 0.6MM to 20MM
- Standard** : ASTM, ASME, DIN, NF, JIS
- Form** : Round, Coil & U-Shape
- Length** : Standard Length & Cut Length

Stainless Steels

- Pipes & Tubes** : ASTM A213, A249, A269 - TP304/304H/304L, 316/316H/316L/316Ti

- Specialize** : Capillary Tubes & IBR Tubes
TP304/304H/304L, 316/ 316H/ 316L/316Ti

- Specialize** : Capillary Tubes & IBR Tubes

- Types** : Insulin Surgical Cannulas
Capillary Surgical Tube
Round Surgical Tubes
Seamless Surgical Pipes
Sterilized Surgical Tubes
Disposable Surgical Tube
Bright Finish Surgical Pipe

Test Certificate

- Manufacturer Test Certification: En 3.1 & 3.2
- IBR Test Certificate Form IIIC



Compression Tube Fittings

Stainless Steel

Size	: 1/16" to 2" "
Standard	: DIN, DIN EN
Type	: Union tee, Female tee, Branch tee, Run tee, Male Connector, Female connector, Elbow, Bulk Head Union, Reducing Union, OD Cap, OD plug.
Pressure Class	: LL Up to 100 bar L Up to 500 bar S Up to 800 bar

Stainless Steel Tube fittings	: Gr. 304, 304L, 304H, 316, 316L, 316Ti, 316H, 316LN, 309S, 309H, 310S, 310H, 317,317L, 317H,321,321H, 347, 347H, 904L
--------------------------------------	--

Duplex & Super Duplex Steel Tube Fittings	: UNS S31803, UNS S32205 (2205), UNS S32750 (2507), UNS S32760
--	--

Carbon Steel Tube Fittings	: A105 / A350
-----------------------------------	---------------

Alloy Steel Tube Fittings	: Gr. 5, Gr.9, Gr.11, Gr.12, Gr.22, Gr.91
----------------------------------	---

Cu Ni Tube Fittings	: C 70600 (90:10), C71500 (70:30)
Nickel	: UNS N02200, UNS N02201
Monel	: UNS N04400, UNS N05500, Alloy 20
Inconel	: UNS N06600, N06601, N08800, N08810, N08825
Hastelloy	: UNS N10276, N06022, N10665, N06455
Specialize	: Double Compression Fitting, Ball Valve, Needle, Check.

Test Certificate

- Manufacturer Test Certification
- En 3.1 & 3.2
- IBR Test Certificate Form IIIC



Mahavir Metals (India)

Manufacturer & Exporter of:

Surgical Pipes & Tubes, Flanges, Fittings, Fasteners, Compression Tube Fittings,
Condensate Pot in Stainless Steel, Carbon Steel, Alloy Steel, Inconel, Hastelloy,
Nickel Alloy, Monel, Copper Nickel

Information:

CALL US: +91 73055 99410

ADDRESS: 1101 Ankush Apartment, 10th Khetwadi, Girgaon, Mumbai, Maharashtra 400004

EMAIL US: rishab@mahavirmetalsindia.com/ sales@mahavirmetalsindia.com

FIND US: www.mahavirmetalsindia.com